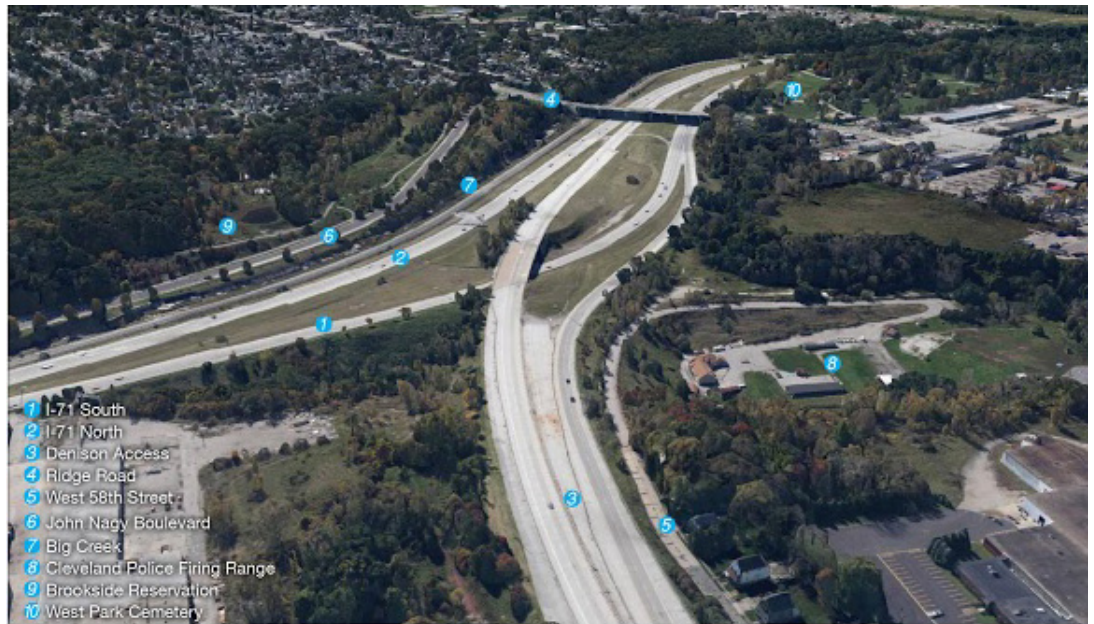


Friends of Big Creek makes name change

NEW NAME AND NEW WIDE-RANGING PLANNING INITIATIVE

After nine years since its founding, the Board of Trustees of Friends of Big Creek agreed on a new name that better reflects the organization's programs and mission statement – Big Creek Connects! In recent months the board approved a three year operating budget with programs that focus on implementation of the Big Creek Watershed Balanced Growth Plan and related watershed stewardship efforts and on implementation of the Lower Big Creek and Brooklyn Greenway Plans.

Another program area entails a comprehensive planning *Initiative* that spans a geographic area adjoining and overlapping the two greenway plans. The *Big Creek/I-71 Relocation & Restoration Initiative* examines relocating sections of Interstate 71 and redirecting the flow of Big Creek to improve stream hydrology, expand greenspace and recreational trails, improve highway access, and create



community and economic development opportunities. The first phase of study undertaken by Big Creek Connects and funded by the cities of Brooklyn and Cleveland and the Northeast Ohio Regional Sewer District is due for completion in March 2015.

Big Creek Created Wetland Project

GREEN INFRASTRUCTURE CONSTRUCTION IS UNDERWAY!

The **Fern Hill Stormwater Treatment Wetland project**, located in Cleveland Metroparks Fern Hill Picnic Area in the Big Creek Reservation, is designed to intercept a 36" stormwater outlet to Big Creek that drains over 50 acres of residential neighborhoods. The stormwater will be diverted into a created wetland that will capture, slow and infiltrate its flow and provide water quality treatment.

The project is funded in part through a \$150,000 grant from the Ohio EPA under the provisions of the Surface Water Improvement Fund (SWIF) and the USEPA Great Lakes Restoration Initiative with engineering and construction managed by Cleveland Metroparks. The project will route the stormwater through a pre-treatment cell before entering the wetland and, in addition to creating wildlife habitat, act as a demonstration project with interpretive signage. The City of Parma and Cleveland Metroparks partnered with Big Creek Connects for the SWIF grant while the General Motors Foundation contributed \$4000 towards the project. Big Creek Connects is providing support to Cleveland Metroparks in education and outreach. Completion date for the wetland is scheduled for June of 2015.

Conceptual design work for the wetland project was developed as part of the Big Creek Watershed Stormwater Retrofit Ranking Project, funded by the Lake Erie Protection Fund and completed in March 2013.

Noting its initial success, Big Creek Connects received funding through the LEPP for a second phase of the project. Completed in August 2014, this phase performed field studies on another 20 sites identified in the initial project and produced 3 additional conceptual plans to be used towards financing for engineering and construction. To learn more about phase I & II of this project, visit bigcreekconnects.org.



P.O. Box 609272
Cleveland, Ohio 44109

info@bigcreekconnects.org
www.bigcreekconnects.org

Board of Trustees

- Mary Ellen Stasek, Chair
- Jeffrey Lennartz, Vice Chair
- Roger J. Kalbrunner, Esq.,
Secretary
- David McBean, RLA, Treasurer
- Thomas Coyne
- Greg Cznadel
- Neil A. Dick
- Ann M. Kuula
- Aaron Morford, P.E.
- Matthew W. O'Brien
- Garrett Ormiston

Executive Director

Bob Gardin
216.269.6472 mobile
216.661.7706 office
bgardin@bigcreekconnects.org

Office

4352 Pearl Road, Suite C
(2d floor, entrance on
Brooklyn Ave.)
Cleveland, Ohio 44109

Advisory Committee

- Gayle Albers, Manager, Cleveland Metroparks Watershed Stewardship Center at West Creek
- Regis Barrett, Chair, City of Brooklyn Zoning Board of Appeals
- Sean Brennan, President, Parma City Council
- George Cantor, Chief City Planner, Cleveland City Planning Commission
- Brian J. Cummins, Cleveland City Council—Ward 14
- Kyle Dreyfuss-Wells, Manager of Environmental Programs, Northeast Ohio Regional Sewer District
- Jane Goodman, Director, Cuyahoga River Restoration / Area of Concern
- Kevin Kelley, President, Cleveland City Council—Ward 13
- James McCall, Parma Heights City Council
- Melissa Miller, Planning and Safety Coordinator, Bellaire-Puritas Development Corporation
- Kathleen Pucci, Brooklyn City Council
- Rory Robinson, Outdoor Recreation Planner, Rivers, Trails, and Conservation Assistance, National Park Service
- Jim Rokakis, Vice President, Western Reserve Land Conservancy, Director, Thriving Communities Institute
- Janine Rybka, District Administrator, Cuyahoga Soil and Water Conservation District
- Derek Schafer, Executive Director, West Creek Conservancy
- Laura Travers, Sanitarian, Cuyahoga County Board of Health
- Jeffrey T. Verespej, Executive Director, Old Brooklyn Community Development Corporation
- Rachid Zoghail, Commissioner, City of Cleveland Water Pollution Control

BCC/FOBC ANNUAL CONTRIBUTION

NAME: _____

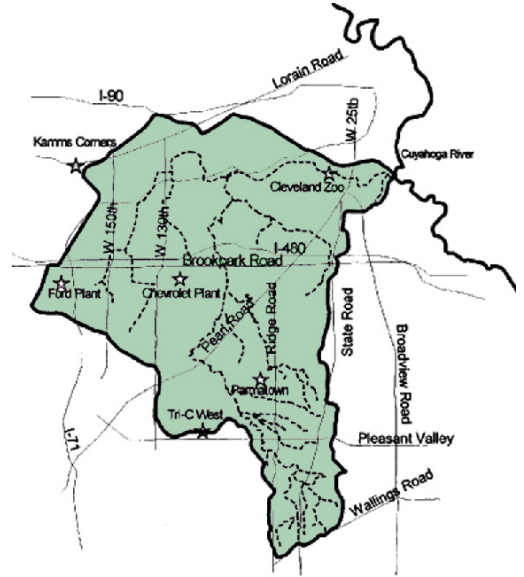
ADDRESS: _____

CITY / STATE / ZIP: _____

PHONE: _____

E-MAIL: _____

- \$250.00 Partner
- \$100.00 Steward
- \$ 50.00 Supporting
- I would like to volunteer my time.
- \$ 35.00 Sustaining
- \$ 20.00 Individual
- \$ _____ Additional donation to the Conservation Fund



UPCOMING EVENTS

Sunday, April 19
EarthFest 2015—Celebrating the Year of Clean Water
Cuyahoga County Fairgrounds

Saturday, May 9 9am-Noon
RiverSweep—Lower Big Creek
Canalway Partners' done-in-a-day cleanup

Saturday, May 16 1-2:30pm
25th Annual RiverDay—Historic Lower Big Creek Valley Tour

Saturday, May 30 9am-Noon
17th Annual Big Creek Watershed Cleanup

Big Creek Connects (formerly Friends of Big Creek) is a greenway advocacy and watershed stewardship 501(c)3 non-profit organization.

Supported in part by financial assistance from:



To conserve, enhance, and bring recognition to the natural and historic resources of the Big Creek Watershed and develop a recreational trail network that connects these resources to each other and the community.

Make checks payable and mail to:
Big Creek Connects
P.O. Box 609272
Cleveland, OH 44109

Secure credit card payment is available online at bigcreekconnects.org

Your contribution is tax-deductible.

Thank you for your support!