

BIG CREEK GREENWAY TRAIL PLANS

Big Creek Connects, formerly Friends of Big Creek, was founded in 2005 with a mission that included developing a recreational trail network that connects Big Creek's natural and historic resources to each other and the community. The Lower Big Creek and Brooklyn Greenway Plans were completed in 2008 and 2009 respectively and complement the organization's founding vision of a 6-1/2 mile greenway-trail corridor from the Towpath Trail along the Cuyahoga River to Brookpark Road and the Big Creek Reservation in Parma. (See plans inside)

Big Creek Connects is working with West Creek Conservancy acquiring parcels for conservation, restoration and public access within the cities of Brooklyn and Cleveland. In addition to each city, other project partners working to im-

plement the plans include Cleveland Metroparks, Western Reserve Land Conservancy and Old Brooklyn Community Development Corporation. Complementing the greenway plans, the Big Creek/I-71 Relocation & Restoration Initiative was developed and completed in 2015. The long-range planning initiative examines relocating sections of Interstate 71 and redirecting the flow of Big Creek back into part of its original channel to improve stream hydrology, expand greenspace and recreational trails, improve highway access, and create community and economic development opportunities. As a short-term measure to reduce erosion and increase opportunities for fish passage along the Brookside Reservation spillway, the Northeast Ohio Regional Sewer District has completed engineering design work to modify the structure with construction to begin by fall 2018.

KIDS IN THE CREEK: EXPANDING HANDS-ON LEARNING

Project partners Big Creek Connects and General Motors - Parma Plant completed its 5th Annual Stream Monitoring Workshop with Brooklyn Intermediate School's 7th grade students and teachers in September. During the field trip, GM's environmental "E-team" and Northeast Ohio Regional Sewer District staff helped BCC assist students in assessing stream habitat, gathering water samples and analyzing chemical and biological data from Stickney Creek, a tributary of Big Creek. Big Creek Connect's executive director visits the student classrooms before and after the workshops to give greater depth to the experience, bringing with him GM staff or water resource professionals from NEORS and other agencies. This May, the 2nd annual live-stake planting was undertaken with the students to improve habitat and help prevent erosion along the stream's banks. Funded primarily by the GM foundation, BCC is working on expanding the program with Cleveland Metropolitan School District's Menlo Park Academy and the Rhodes School of Environmental Studies.



Students collect samples with NEORS's Dr. Eric Soehlen

WATERSHED BASED STRATEGIC POLLUTION PLAN

Big Creek Connects and project partners developed a Nonpoint Source Implementation Strategic (NPS-IS) Plan for the Big Creek watershed. Non-point source pollution, unlike pollution from industrial and sewer treatment plants, comes from many diffuse sources. NPS pollution is caused by rainfall or snowmelt moving over and through the ground, picking up pollutants that end up in our rivers, wetlands, ground water, and lakes. The plan identifies non-point source pollution projects that local entities are able to effectively propose and implement utilizing funding made available through the U.S. Clean Water Act Section 319 program and the Great Lakes Restoration Initiative. Projects include conservation measures; stream restoration practices; and bio-retention, bio-swale, permeable pavement, and

other source control retrofits.

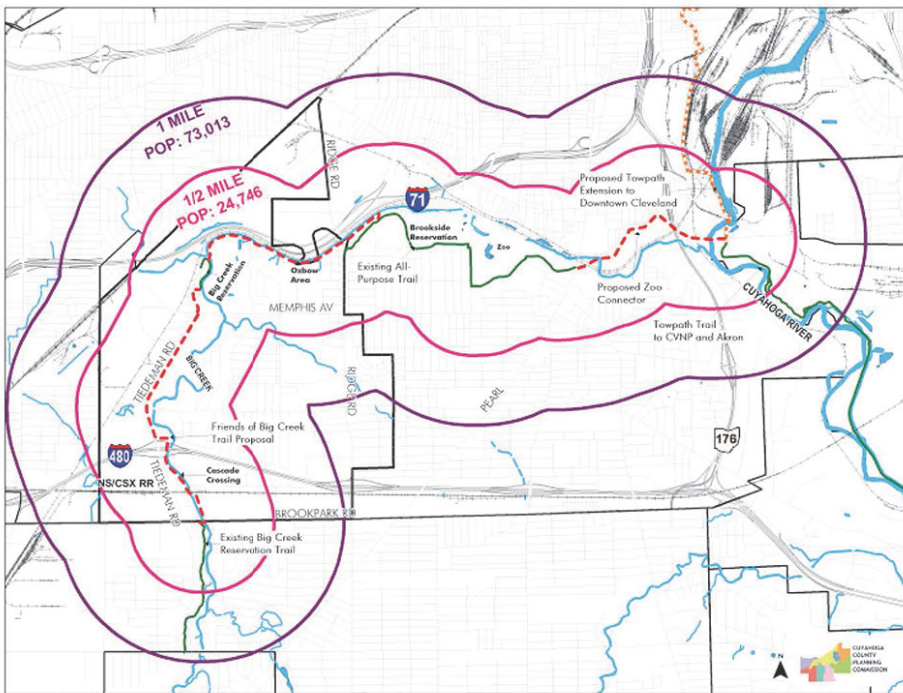
Funding for the plan was provided by the U.S. and Ohio EPA's, Northeast Ohio Regional Sewer District, Cleveland Metroparks, and from the Big Creek watershed communities of Cleveland, Brooklyn, Brook Park, Parma, and Parma Heights. Big Creek Connects partnered with West Creek Conservancy in hiring Tetra Tech consultants to assist in the development and completion of NPS-IS plans for both watersheds. In April 2017, both plans were approved by the Ohio EPA and the U.S. EPA. The Big Creek plan identifies 52 projects throughout the watershed, 6 of them identified as short term. Big Creek Connects is working towards implementation of the projects through NEORS and other funding sources.

BIG CREEK CONNECTS

We invite you to share our vision:

Build a continuous 6-1/2 mile greenway and trail network to link the Ohio & Erie Canal Towpath Trail, Cleveland Metroparks Zoo, Brookside Reservation and the Big Creek Reservation through the cities of Cleveland, Brooklyn and Parma.

Find details at bigcreekconnects.org

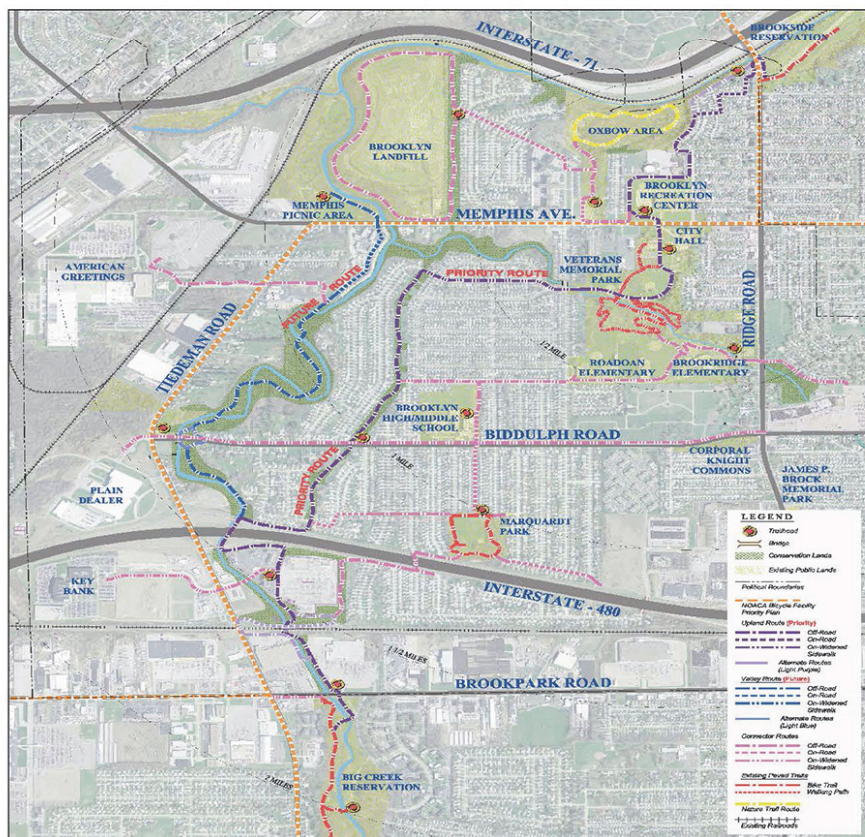


Big Creek confluence with Cuyahoga River



Big Creek channel along I-71

Fern Hill Picnic Area – Big Creek Reservation



Big Creek Greenway Trail Alignment & Neighborhood Connector Plan

Overall Master Plan

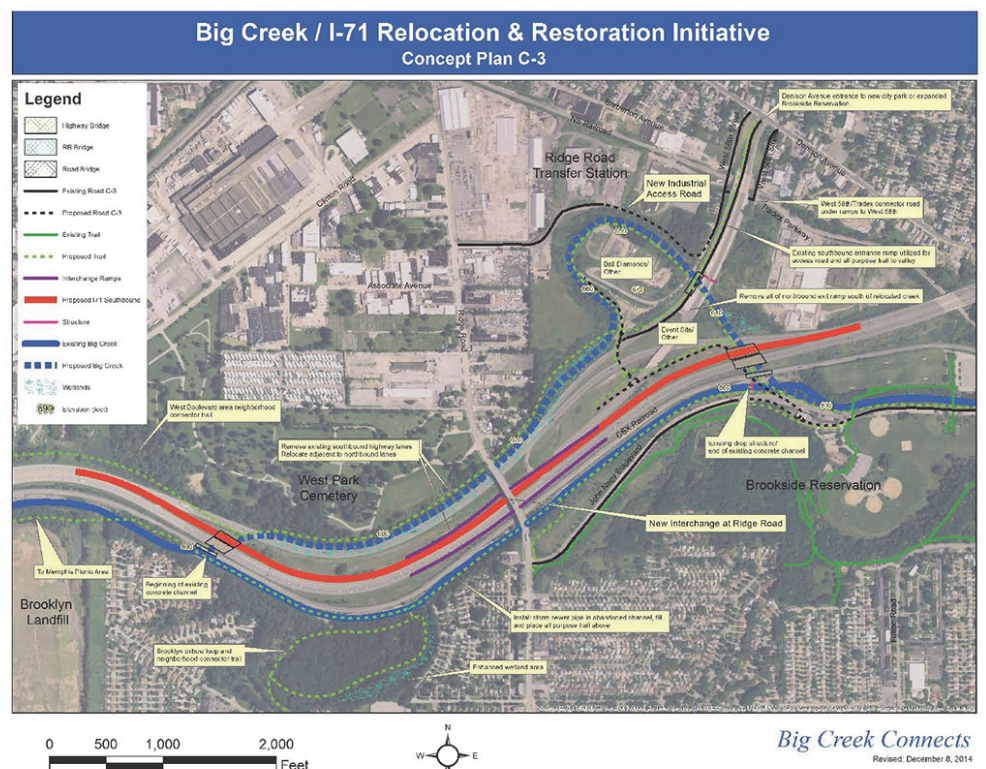


Lower Big Creek Greenway Redevelopment & Restoration Plan

Overall Map - Trail Plan & Restoration



Big Creek in Cleveland Metroparks Brookside Reservation: existing drop structure (left) and proposed realignment (right)



Big Creek Connects

Revised: December 8, 2014

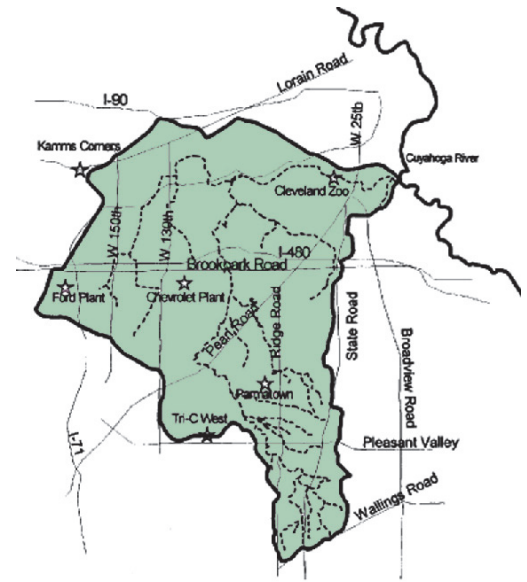
STREAM SIGNAGE PROJECT

A stream boundary and crossing signage project is underway for the Big Creek watershed. Big Creek Connects received funding through the GM Foundation to design and develop signage and will be working with the watershed communities to assist on their installation. Thirty-nine proposed boundary marker sign locations have been identified along major streets entering the watershed, along with 54 locations for 27 stream crossings. (one sign from each direction)

The location and design choices are being coordinated with each community, Cleveland Metroparks, and other stakeholders.



The proposed wording for the boundary signs will simply read Entering Big Creek Watershed. The stream crossing signs will identify Big Creek's main stem and its tributaries, including the East or Main Branch that runs through the Metroaparks' Big Creek Reservation, and the West, Stickney, and Chevy branches. The project is anticipated for completion by fall 2018.



20th Annual Big Creek Watershed Clean Up is Saturday, June 2

Big Creek Connects and Cuyahoga Soil & Water Conservation District with the support of community stakeholders will host the annual cleanup from 9:00 am-Noon. Volunteers are needed to help pick up stream-side trash at 3 sites in Cleveland, Brooklyn, and Parma/Parma Heights. Find details online.



P.O. Box 609272
4352 Pearl Road, Suite C
Cleveland, Ohio 44109

info@bigcreekconnects.org
www.bigcreekconnects.org

Board of Trustees

Mary Ellen Stasek, Chair
Garrett Ormiston, Vice Chair
Roger J. Kalbrunner, Esq., Secretary
David McBean, RLA, Treasurer
Greg Cznadel, Ann M. Kuula, Neil A. Dick,
Jeffrey Lennartz, Matthew W. O'Brien

Executive Director

Bob Gardin
216.269.6472 mobile
216.661.7706 office
bgardin@bigcreekconnects.org

Advisory Committee

Gayle Albers, Manager, Cleveland Metroparks Watershed Stewardship Center at West Creek
Regis Barrett, Chair, City of Brooklyn Zoning Board of Appeals
Sean Brennan, President, Parma City Council
George Cantor, Chief City Planner, Cleveland City Planning Commission
Donna Friedman, Watershed Team Leader, Northeast Ohio Regional Sewer District
Jane Goodman, Director, Cuyahoga River Restoration / Area of Concern
Kevin Kelley, President, Cleveland City Council—Ward 13
James McCall, Parma Heights City Council
Melissa Miller, Planning and Safety Coordinator, Bellaire-Puritas Development Corporation
Kathleen Pucci, Brooklyn City Council
Rory Robinson, Outdoor Recreation Planner, Rivers, Trails, and Conservation Assistance, National Park Service
Jim Rokakis, Vice President, Western Reserve Land Conservancy, Director, Thriving Communities Institute
Janine Rybka, District Administrator, Cuyahoga Soil and Water Conservation District
Derek Schafer, Executive Director, West Creek Conservancy
Jeffrey T. Verespej, Executive Director, Old Brooklyn Community Development Corporation
Rachid Zoghaib, Commissioner, City of Cleveland Water Pollution Control

Big Creek is the 3rd largest tributary of the Cuyahoga River. Its watershed contains over 130 miles of streams and culverts. Together they drain nearly 39 square miles from 8 municipalities - Cleveland, Brooklyn, Linndale, Parma, Parma Heights, Brook Park, Middleburg Heights, and North Royalton. Over 90% of the watershed's area has been developed and 39% of the land surface has been made impervious, making Big Creek the most heavily urbanized watershed of any major tributary in the Cuyahoga River Watershed. This degree of urbanization provides tremendous challenge...and opportunity.

Big Creek Connects (formerly Friends of Big Creek) is a greenway advocacy and watershed stewardship 501(c)3 non-profit organization.

Supported in part by financial assistance from:



To conserve, enhance, and bring recognition to the natural and historic resources of the Big Creek Watershed and develop a recreational trail network that connects these resources to each other and the community.

SUPPORT BIG CREEK CONNECTS WITH YOUR ANNUAL CONTRIBUTION

- ✓ \$250.00 Partner
- ✓ \$ 50.00 Supporting
- ✓ \$ 20.00 Individual
- ✓ \$100.00 Steward
- ✓ \$ 35.00 Sustaining
- ✓ Corporate Sponsorships available

Send your contribution with your name, address, phone and email. Make checks payable and mail to:
Big Creek Connects, P.O. Box 609272, Cleveland, OH 44109.

Secure credit card payment is available online at bigcreekconnects.org. Your contribution is tax-deductible.

Thank you for your interest and support!