

BIG CREEK STREAM MONITORING PROGRAM ADDS ANOTHER SCHOOL



Project partners Big Creek Connects and General Motors-Parma Plant coordinated the 5th Annual Stream Monitoring Program with Brooklyn School's

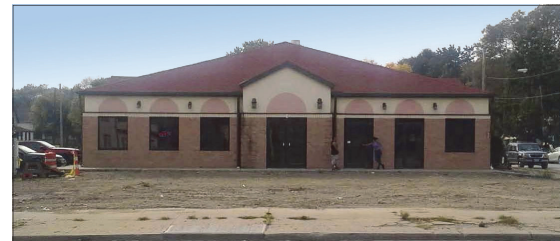
7th grade class of about 90 students in September. New to the program this school year is Menlo Park Academy, a Cleveland charter school, whose four classes of about 200 students performed two stream monitoring workshops in October. The Brooklyn students returned to monitor Big Creek's Stickney Branch in Brooklyn Memorial Park, while the Menlo Park students monitored Big Creek's East and West Branches in Metroparks' Memphis Picnic Area. GM's environmental "E-team" and Northeast Ohio Regional Sewer District (NEORS), Cleveland Metroparks, and Cuyahoga Soil

& Water Conservation District staff helped BCC assist students in assessing stream habitat, gathering water samples, and analyzing chemical and biological data. During Menlo Park Academy's full-day outing, Cleveland Museum of Natural History and Cuyahoga Community College staff led the classes on tours learning about geology, archeology, ecology, and watershed management. Thanks to funding provided by the GM Foundation and NEORS, project partners are looking forward to adding a third school to its Fall 2019 stream monitoring program.

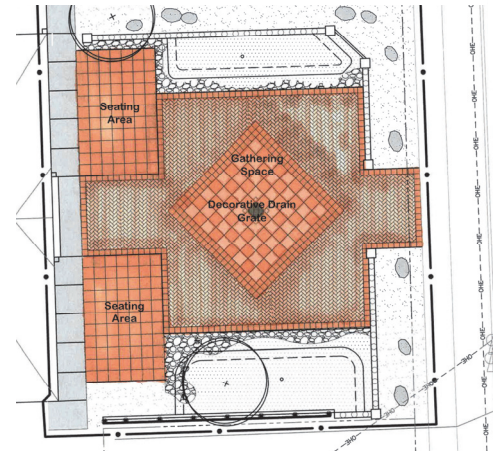


CARIBE BAKERY GREEN INFRASTRUCTURE PROJECT

A Green Infrastructure Grant from the Northeast Ohio Regional Sewer District was awarded to West Creek Conservancy and Big Creek Connects for the Caribe Bakery Green Infrastructure Project. WCC is acting as the administrator on BCC's behalf for the \$110,700 grant that will fund most of the \$165,000 project. The project will divert rainwater from the building's roof and a new plaza into two bioretention cells, reducing the volume of stormwater entering the combined sewer system. BCC as the project manager, WCC, and Rakauskas Architecture are working



with the owners on implementing the plans being developed by Environmental Design Group. The project will include interpretive signage about the project in both English and Spanish at this popular gathering place along Fulton Road on Cleveland's near west side.



Planned plaza pavers at Caribe Bakery, Fulton Rd. and Seymour Ave.

OTHER PROJECTS IN THE "PIPELINE"

Big Creek Connects has been involved in other projects with West Creek Conservancy recently. BCC partnered with WCC in developing concept plans by consultant OHM Advisors for retrofitting the parking lot with bio-retention for Malley's Chocolates along Brookpark Road in Brook Park. In Brooklyn, WCC acted on BCC's behalf recently by applying for federal funding through Ohio EPA with a match from NEORS to restore the eroding streambanks along Stickney Creek in Brooklyn Memorial Park. WCC also assisted the City of Brooklyn in applying for recreational trail funds to reconfigure the pathways along the creek to increase pedestrian circulation and connections. This April, BCC partnered with Cleveland Metroparks on a Sustain Our Great

Lakes grant to retrofit over 3 acres of parking lot in Brookside Reservation with bio-retention cells. We'll report further about these and other

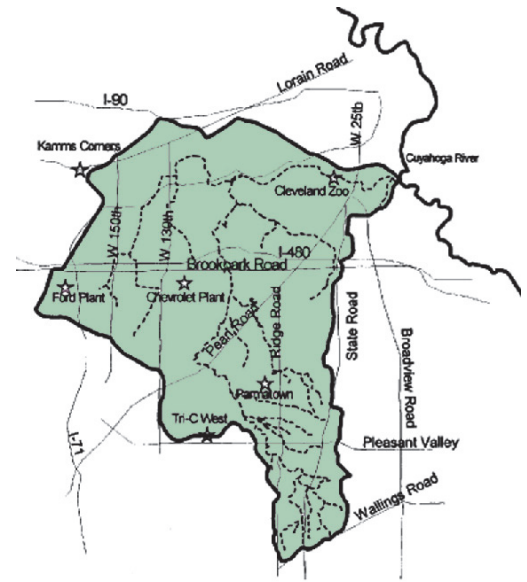
Stickney Creek: Stream & Floodplain Restoration Concept



projects as funding becomes secured. Special thanks to NEORS for providing funding through its Watershed Organization Service Agreement Program for making many of these projects possible.

MARK YOUR SPRING 2019 CALENDAR – Find details online

- Wed., April 17** Big Creek Watershed Balanced Growth Partners – 8th Annual Meeting
4–6:30 pm Cassidy Theatre, 6200 Pearl Rd., 44130 This year’s meeting is hosted by the City of Parma Heights, one of the 5 cities making up the partnership.
- Sat., May 11** RiverSweep – Canalway Partners done-in-a-day cleanup. Big Creek/
9 am – Noon Lower Harvard: Meet at Sand Bar, 4002 Jennings Rd., 44109.
- Sat., May 18** River Day 2019: – BCC joins the festivities surrounding the 50th
1– 2:30 pm Anniversary of the 1969 fire on the Cuyahoga with a special tour of the area where Big Creek meets the river, including the Towpath Trail extension underway. Guest speakers: Ed Kelly, Storm Water Control Services; Jim Ridge, Canalway Partners. Meet at the Sand Bar, 4002 Jennings Road, Cle 44109. Refreshments. Wear sturdy clothing.
- Sat., June 1** Big Creek Watershed Cleanup. Big Creek Connects and Cuyahoga Soil
9am – Noon & Water Conservation District with the support of community stakeholders will host the 21st annual cleanup. Volunteers are needed to help pick up stream-side trash at 3 sites in Cleveland, Brooklyn, and Parma/Parma Heights. Find details online. Wear long sleeves and pants, closed-toe shoes – Bags and work gloves provided – Children under 18 must have adult supervision – Refreshments.
- Date TBA** Spring Mini-Symposium – Watch for announcement. Big Creek
Connects—*connecting you and me to our Big Creek, our Crooked River, our Great Lake, and a vision for the future.*



Big Creek is the 3rd largest tributary of the Cuyahoga River. Its watershed contains over 130 miles of streams and culverts. Together they drain nearly 39 square miles from 8 municipalities - Cleveland, Brooklyn, Linndale, Parma, Parma Heights, Brook Park, Middleburg Heights, and North Royalton. Over 90% of the watershed’s area has been developed and 39% of the land surface has been made impervious, making Big Creek the most heavily urbanized watershed of any major tributary in the Cuyahoga River Watershed. This degree of urbanization provides tremendous challenge...and opportunity.



P.O. Box 609272
4352 Pearl Road, Suite C
Cleveland, Ohio 44109

info@bigcreekconnects.org
www.bigcreekconnects.org

Board of Trustees

Mary Ellen Stasek, Chair
Garrett Ormiston, Vice Chair
Roger J. Kalbrunner, Esq., Secretary
David McBean, RLA, Treasurer
Greg Cznadel, Ann M. Kuula, Neil A. Dick,
Jeffrey Lennartz, Dale Smith

Executive Director

Bob Gardin
216.269.6472 mobile
216.661.7706 office
bgardin@bigcreekconnects.org

Advisory Committee

Gayle Albers, Manager, Cleveland Metroparks Watershed Stewardship Center at West Creek
Regis Barrett, Chair, City of Brooklyn Zoning Board of Appeals
Sean Brennan, President, Parma City Council
Donna Friedman, Watershed Team Leader, Northeast Ohio Regional Sewer District
Jane Goodman, Director, Cuyahoga River Restoration / Area of Concern
Kevin Kelley, President, Cleveland City Council—Ward 13
James McCall, Parma Heights City Council
Melissa Miller, Planning and Safety Coordinator, Bellaire-Puritas Development Corporation
Kathleen Pucci, Brooklyn City Council
Rory Robinson, Outdoor Recreation Planner, Rivers, Trails, and Conservation Assistance, National Park Service, Retired
Jim Rokakis, Vice President, Western Reserve Land Conservancy, Director, Thriving Communities Institute
Janine Rybka, District Administrator, Cuyahoga Soil and Water Conservation District
Derek Schafer, Executive Director, West Creek Conservancy
Jeffrey T. Verespej, Executive Director, Old Brooklyn Community Development Corporation
Rachid Zoghaib, Commissioner, City of Cleveland Water Pollution Control

Big Creek Connects (formerly Friends of Big Creek) is a greenway advocacy and watershed stewardship 501(c)3 non-profit organization.

Supported in part by financial assistance from:



To conserve, enhance, and bring recognition to the natural and historic resources of the Big Creek Watershed and develop a recreational trail network that connects these resources to each other and the community.

SUPPORT BIG CREEK CONNECTS WITH YOUR ANNUAL CONTRIBUTION

- ✓ \$250.00 Partner
- ✓ \$100.00 Steward
- ✓ \$ 50.00 Supporting
- ✓ \$ 35.00 Sustaining
- ✓ \$ 20.00 Individual
- ✓ Corporate Sponsorships available

Send your contribution with your name, address, phone and email. Make checks payable and mail to:
Big Creek Connects, P.O. Box 609272, Cleveland, OH 44109.

Secure credit card payment is available online at bigcreekconnects.org. Your contribution is tax-deductible.

Thank you for your interest and support!