

The Permaculture Frontier

Landscapes Where People and Nature Work
Together

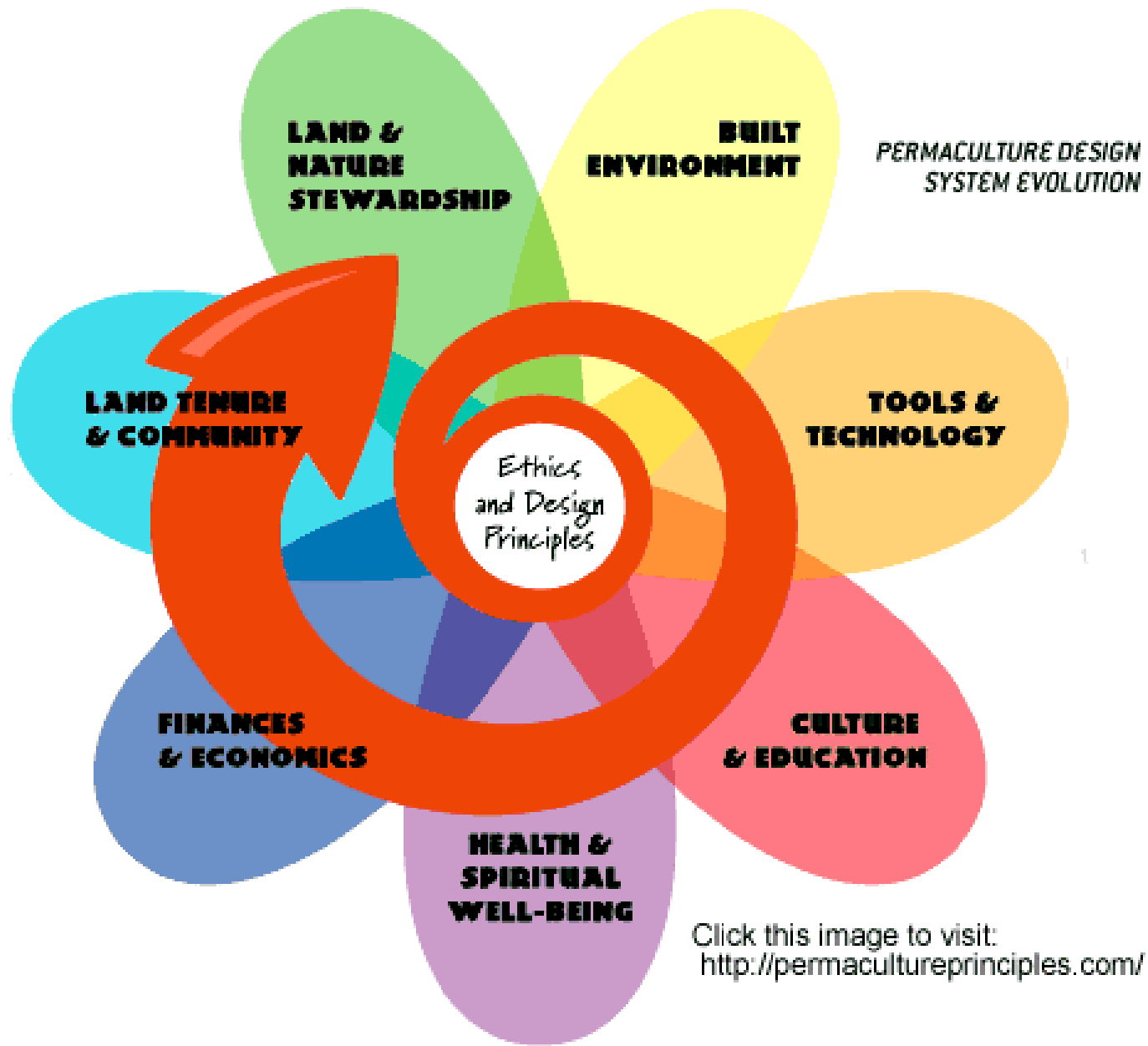
by

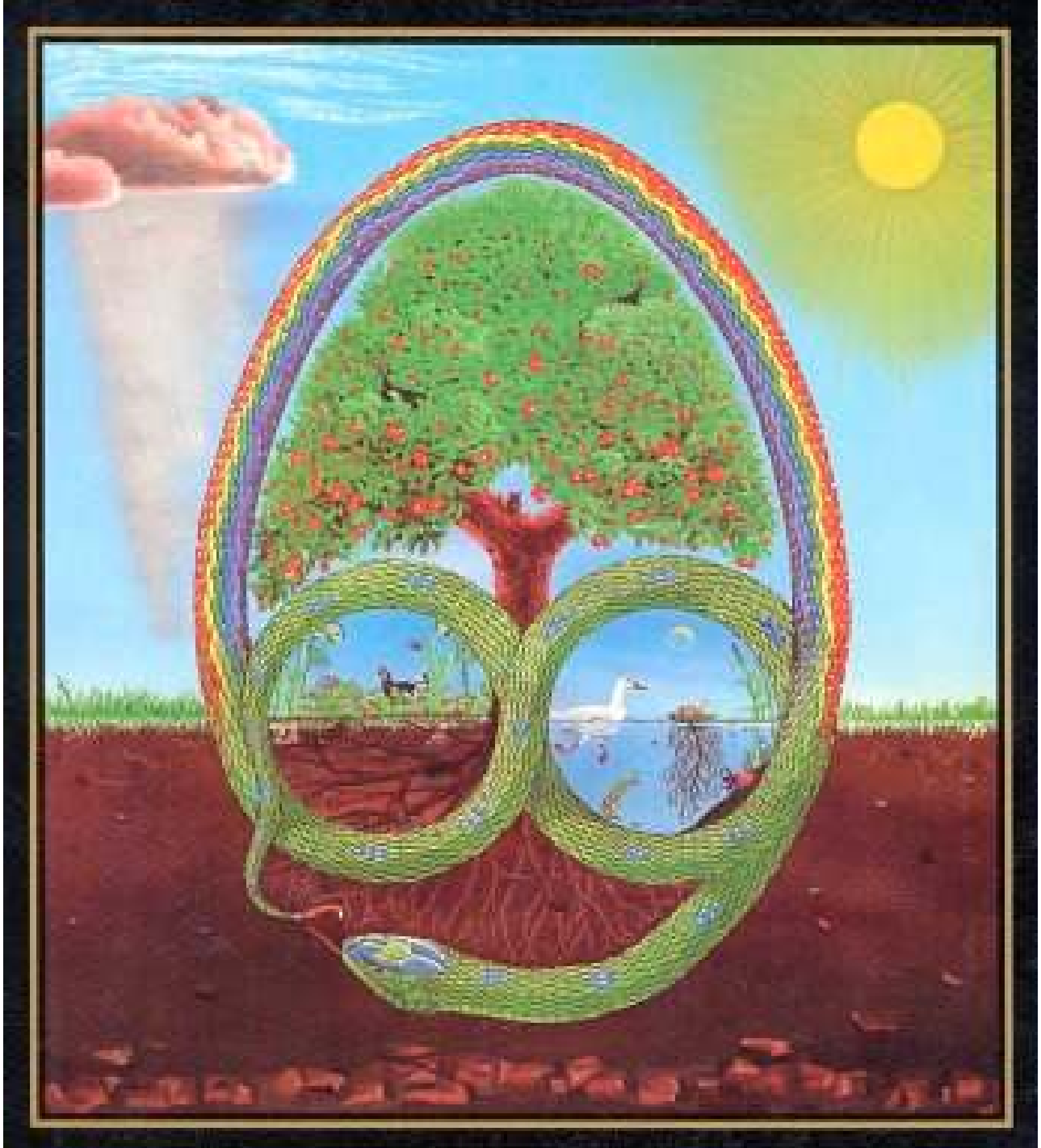
Jonathan Hull

Green Triangle

www.greentri.org







12. Creatively use & respond to change



1. Observe & interact

11. Use edges & value the marginal

Earth Care



2. Catch & store energy

10. Use & value diversity



3. Obtain a yield

9. Use small & slow solutions



4. Apply self-regulation & accept feedback

8. Integrate rather than segregate



Fair Share

People Care

5. Use & value renewable resources & services

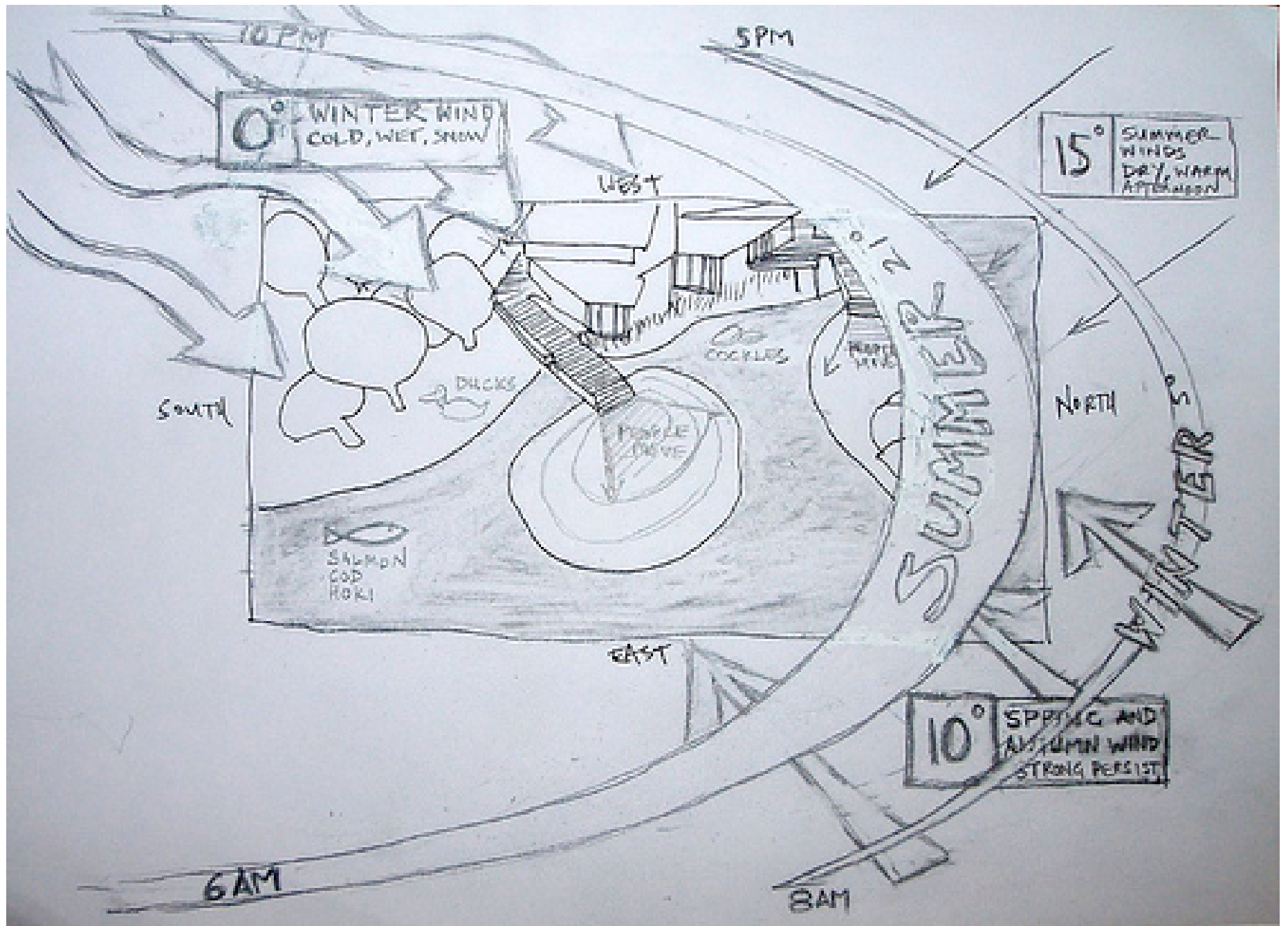


7. Design from patterns to details



6. Produce no waste





12. Creatively use & respond to change



1. Observe & interact

11. Use edges & value the marginal

Earth Care



2. Catch & store energy

10. Use & value diversity



3. Obtain a yield

9. Use small & slow solutions



4. Apply self-regulation & accept feedback

8. Integrate rather than segregate



Fair Share

People Care

7. Design from patterns to details



5. Use & value renewable resources & services



6. Produce no waste







12. Creatively use & respond to change



Earth Care

1. Observe & interact

11. Use edges & value the marginal



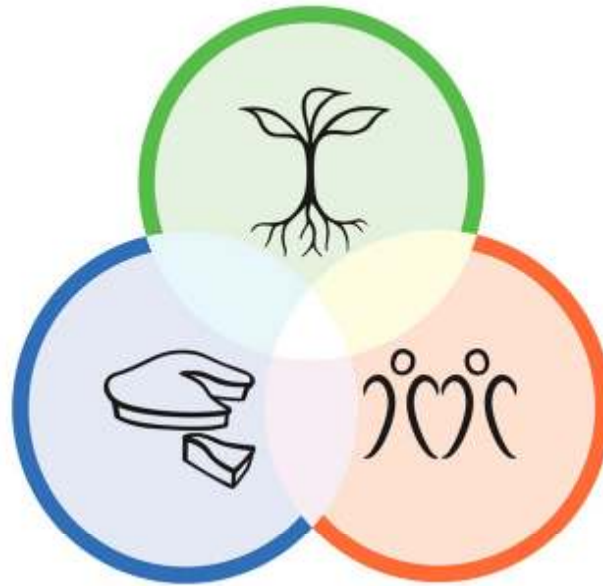
2. Catch & store energy

10. Use & value diversity



3. Obtain a yield

9. Use small & slow solutions



Fair Share

People Care

4. Apply self-regulation & accept feedback



8. Integrate rather than segregate



5. Use & value renewable resources & services



7. Design from patterns to details



6. Produce no waste





12. Creatively use & respond to change



1. Observe & interact

11. Use edges & value the marginal

Earth Care



2. Catch & store energy

10. Use & value diversity



3. Obtain a yield

9. Use small & slow solutions



Fair Share

People Care



4. Apply self-regulation & accept feedback

8. Integrate rather than segregate



7. Design from patterns to details



5. Use & value renewable resources & services



6. Produce no waste



12. Creatively use & respond to change

1. Observe & interact

2. Catch & store energy

3. Obtain a yield

4. Apply self-regulation & accept feedback

5. Use & value renewable resources & services

6. Produce no waste

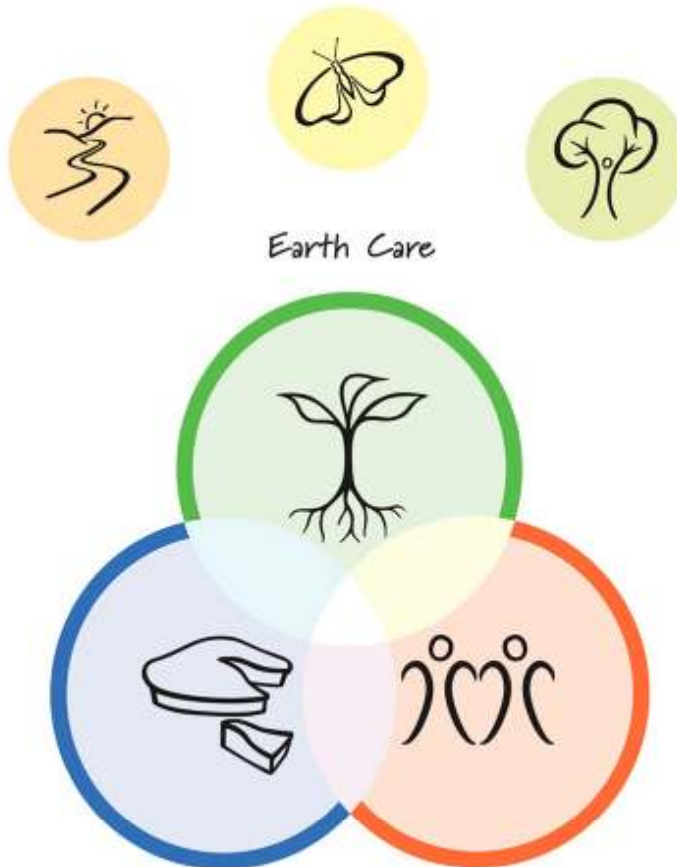
7. Design from patterns to details

3. Integrate rather than segregate

3. Use small & slow solutions

10. Use & value diversity

11. Use edges & value the marginal





12. Creatively use & respond to change



1. Observe & interact

11. Use edges & value the marginal

Earth Care



2. Catch & store energy

10. Use & value diversity



3. Obtain a yield

9. Use small & slow solutions



4. Apply self-regulation & accept feedback

8. Integrate rather than segregate



Fair Share

People Care



5. Use & value renewable resources & services

7. Design from patterns to details



6. Produce no waste



12. Creatively use & respond to change



11. Use edges & value the marginal

Earth Care

1. Observe & interact

10. Use & value diversity



2. Catch & store energy



3. Obtain a yield

9. Use small & slow solutions



Fair Share

People Care



4. Apply self-regulation & accept feedback

8. Integrate rather than segregate



7. Design from patterns to details



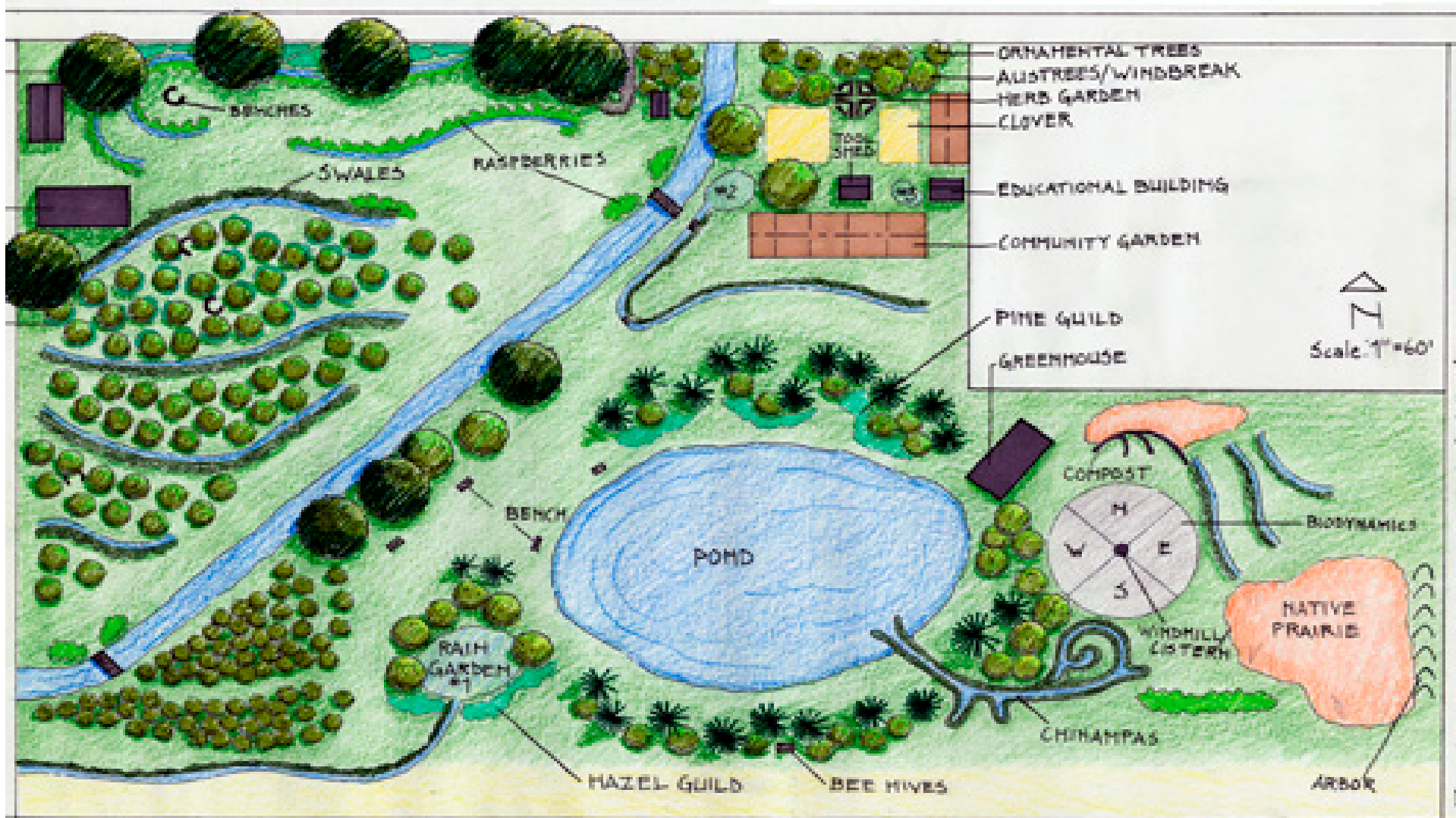
5. Use & value renewable resources & services



6. Produce no waste



permacultun



12. Creatively use & respond to change



11. Use edges & value the marginal

Earth Care

1. Observe & interact

10. Use & value diversity



2. Catch & store energy



3. Obtain a yield

9. Use small & slow solutions



Fair Share

People Care



4. Apply self-regulation & accept feedback

8. Integrate rather than segregate



7. Design from patterns to details



5. Use & value renewable resources & services



6. Produce no waste



permacultun



12. Creatively use & respond to change

1. Observe & interact

2. Catch & store energy

3. Obtain a yield

4. Apply self-regulation & accept feedback

5. Use & value renewable resources & services

6. Produce no waste

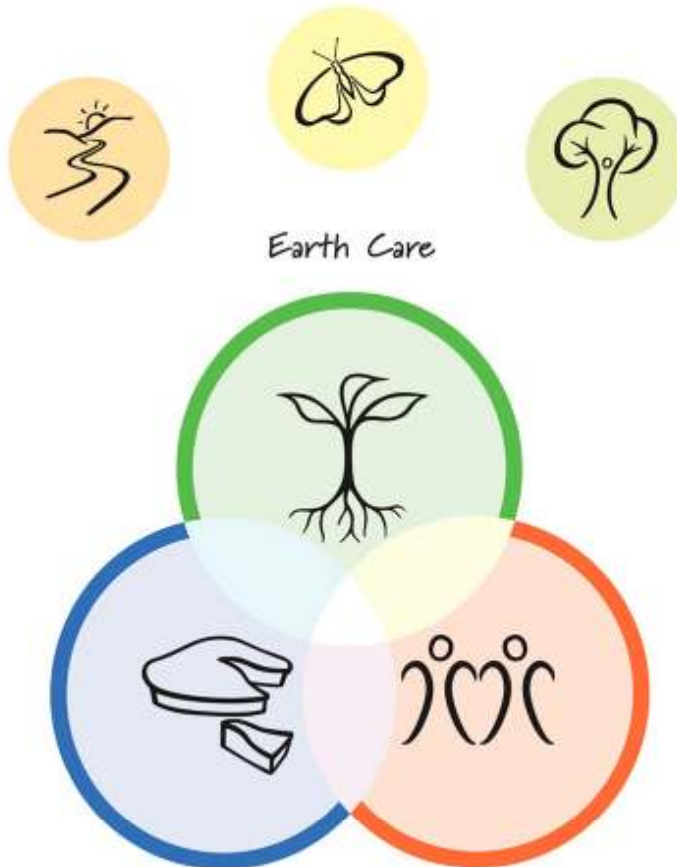
11. Use edges & value the marginal

10. Use & value diversity

9. Use small & slow solutions

8. Integrate rather than segregate

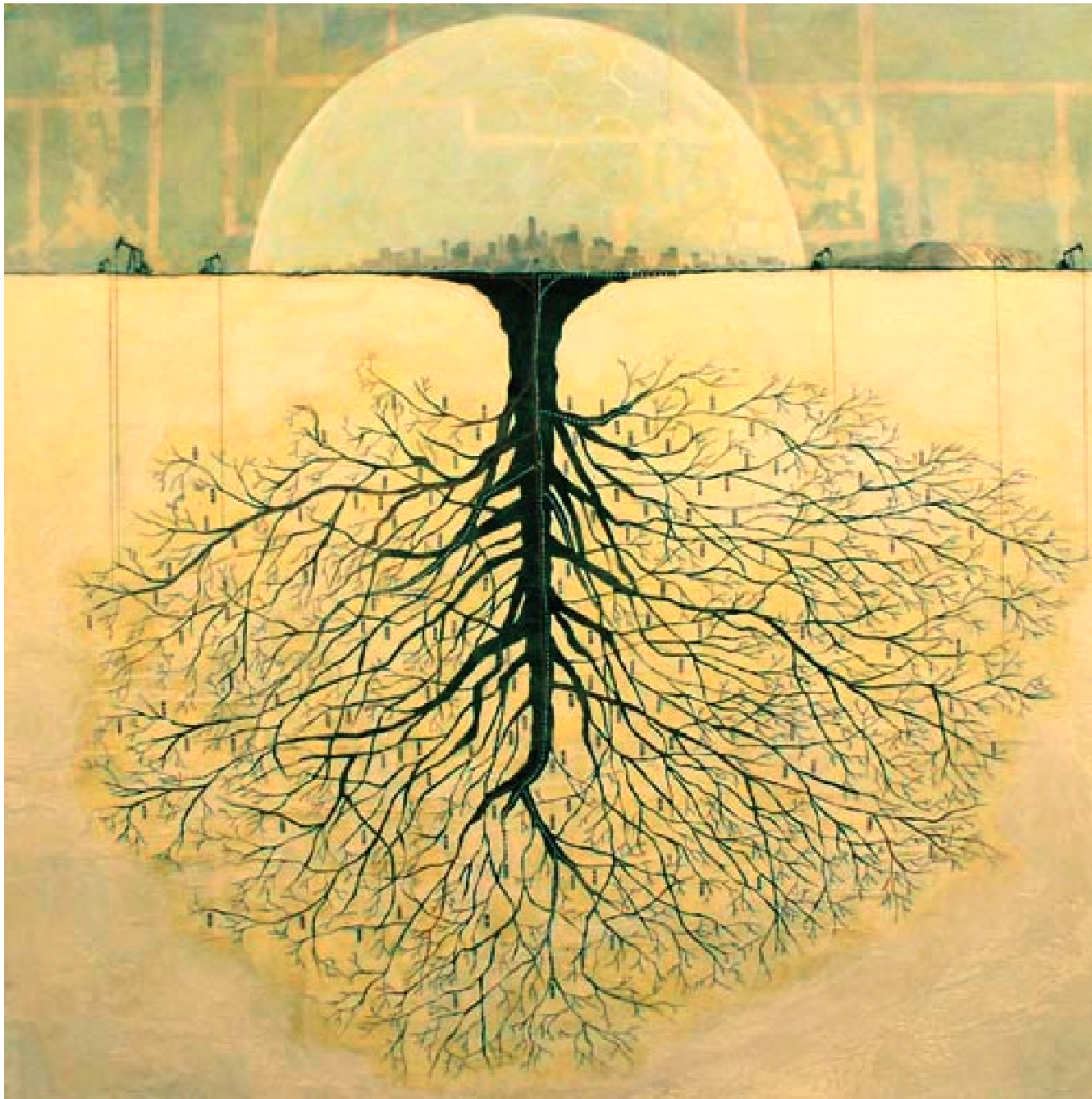
7. Design from patterns to details



Earth Care

Fair Share

People Care



12. Creatively use & respond to change



11. Use edges & value the marginal

Earth Care

1. Observe & interact

10. Use & value diversity



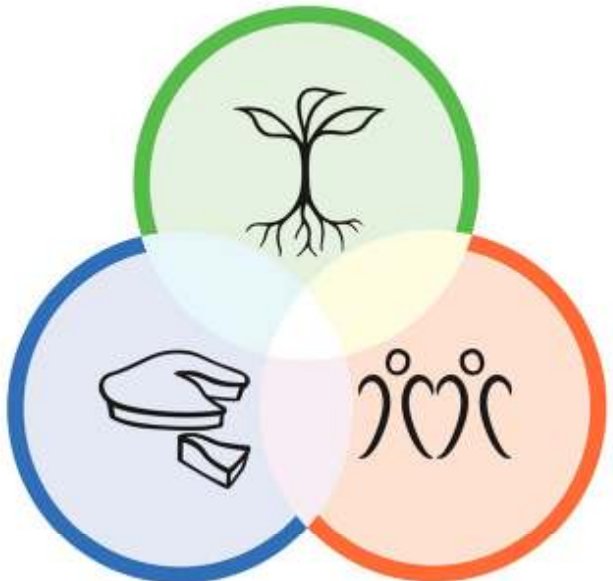
2. Catch & store energy

9. Use small & slow solutions



3. Obtain a yield

8. Integrate rather than segregate



Fair Share

People Care



4. Apply self-regulation & accept feedback

7. Design from patterns to details



5. Use & value renewable resources & services



6. Produce no waste



12. Creatively use & respond to change

1. Observe & interact

2. Catch & store energy

3. Obtain a yield

4. Apply self-regulation & accept feedback

5. Use & value renewable resources & services

6. Produce no waste

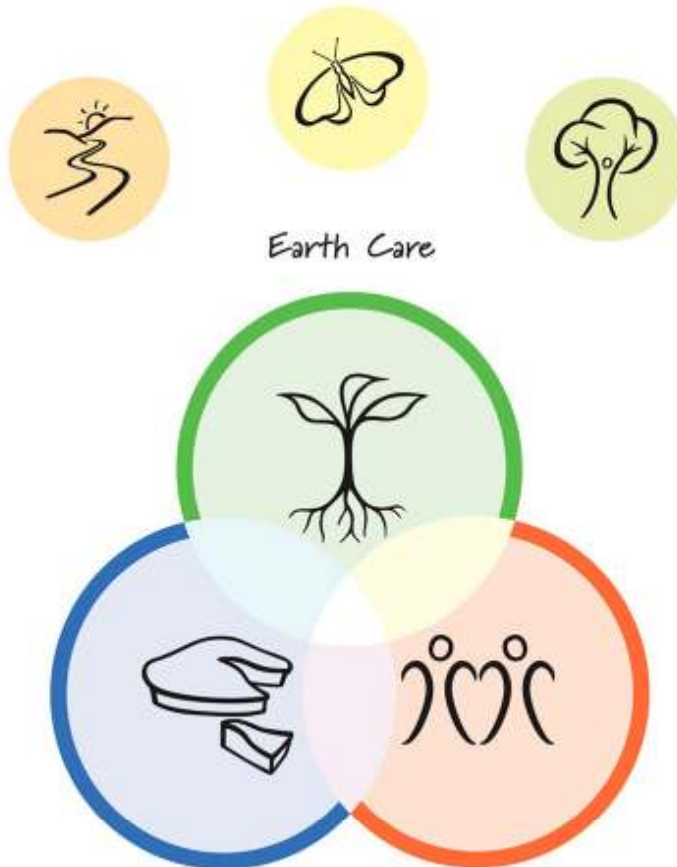
7. Design from patterns to details

3. Integrate rather than segregate

9. Use small & slow solutions

10. Use & value diversity

11. Use edges & value the marginal





12. Creatively use & respond to change

1. Observe & interact

2. Catch & store energy

3. Obtain a yield

4. Apply self-regulation & accept feedback

5. Use & value renewable resources & services

6. Produce no waste

7. Design from patterns to details

3. Integrate rather than segregate

3. Use small & slow solutions

10. Use & value diversity

11. Use edges & value the marginal

