

## BIG CREEK SIGNAGE PROJECT



Perhaps you have noticed blue & white Big Creek crossing and watershed boundary signs along major streets on the west side of Cleveland and adjacent suburbs to the south this fall? A total of 96 signs are the result of the Big Creek Signage Project, undertaken by Big Creek Connects to enhance the public's awareness of the watershed in which they live and to encourage good stewardship of our valuable streams and land-uses within the watershed. In addition to helping identify the various and often confusing branches of Big Creek, the signage identifies the boundary of the Big Creek and adjacent watersheds.

The adjacent watersheds, also known as drainage basins, include Rocky River to the west and south, West Creek to the east, Chippewa Creek to the southeast, and Walworth Run to the north. All these streams, other than the Rocky River, are tributaries to the Cuyahoga River. The Cuyahoga and Rocky, in turn, are major tributaries to Lake Erie. The Big Creek watershed, at 38 square miles in size, encompasses all or parts of several communities including North Royalton, Parma, Parma Heights, Brook Park, Brooklyn, and Cleveland. Most of the watershed's northern boundary follows a fossil beach ridge upon which Denison Avenue in Cleveland now lies. Lake Whittlesey, a precursor to Lake Erie, created this ridge about

13,500 years ago during the last glacial retreat. The beach ridge created the lower Big Creek valley, diverting the north-flowing creek eastward to join the Cuyahoga River.

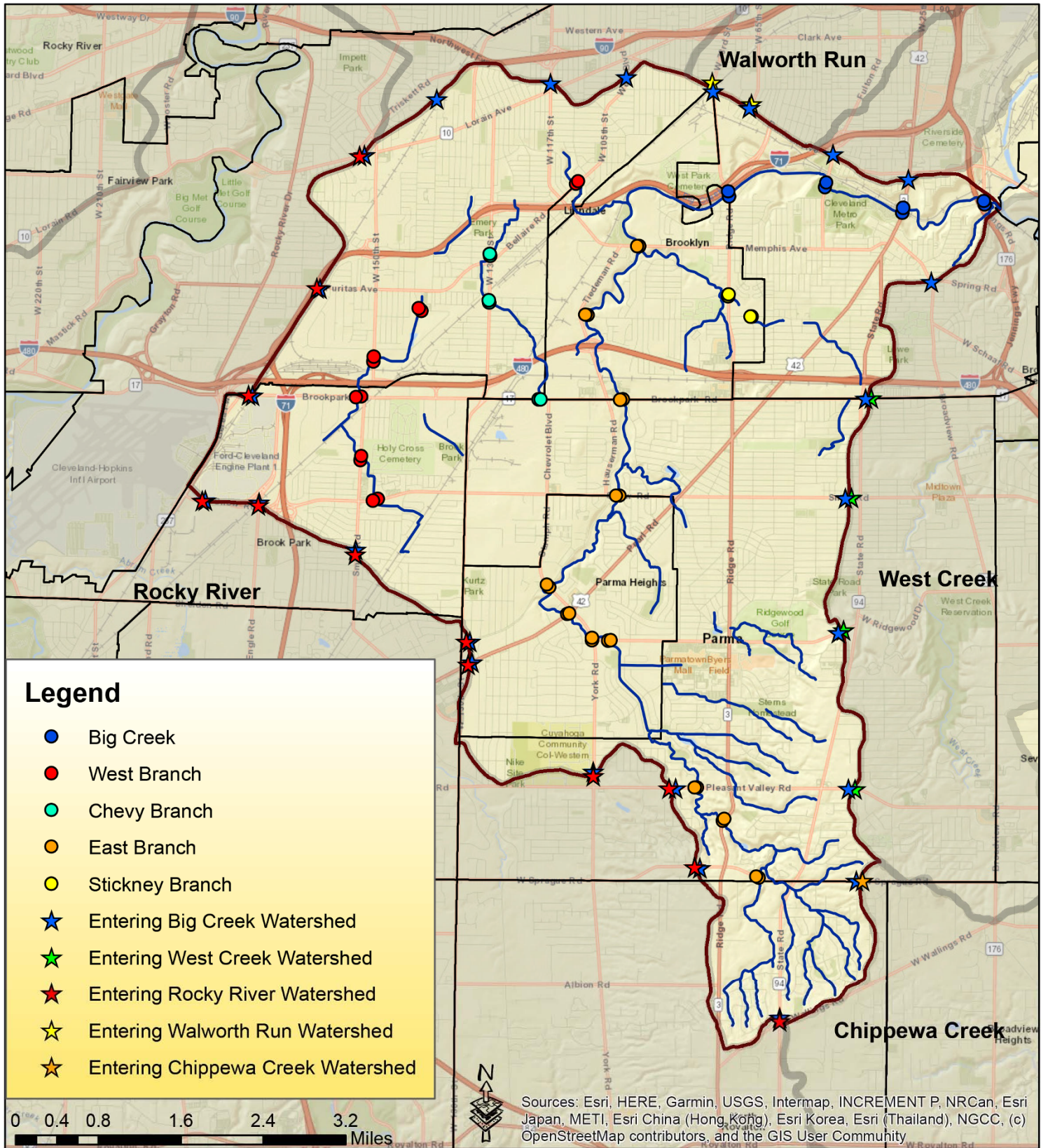
Big Creek enters the Cuyahoga just east of Jennings Road near lower Harvard Avenue after traversing through several cities, beginning with the 8.5 mile long East Branch's headwaters in North Royalton. From there it passes through Parma, Parma Heights, and Brooklyn, where it merges with the Stickney Branch. The 6-mile long West Branch begins in Brook Park and traverses through the Bellaire-Puritas neighborhood where it meets with the Chevy Branch. From there it continues through the Jefferson and West Boulevard neighborhoods where much of it is culverted as it turns east to meet with the East Branch in Cleveland Metroparks' Memphis Picnic Area to form the main branch of Big Creek.

During its last 4 miles, Big Creek runs parallel along I-71 in a concrete channel before passing through Metroparks' Brookside Reservation and the Zoo, where part of it is culverted before opening up again, on its way to the Cuyahoga River. Big Creek in the lower valley, east of Ridge Road, acts as a border between Cleveland's Old Brooklyn neighborhood to the south and the city's Stockyards and Brooklyn Centre neighborhoods to the north. Although the signage project focused on the larger streets where the boundaries of Big Creek and its main branches cross, we hope this project encourages the public to explore its tributaries of all sizes as they become more familiar with the watershed.

Please see the map of sign locations on the next page or visit <http://bit.ly/BCsignmap>.



# Big Creek Watershed Signage



City of Cleveland  
City of Brook Park



City of Parma  
City of Brooklyn



City of Parma Heights  
City of North Royalton



Northeast Ohio Regional  
Sewer District

Protecting Your Health and Environment